



# Litchfield Lane

Creton, Northamptonshire

oriordanbond  
LETTINGS





## Litchfield Lane

Creton

NN6 8NJ

£1,800 PCM

A charming stone built four bedroom cottage in the sought after village of Creton. The ground floor offers a large entrance hall with cloakroom/WC and storage cupboards, a stylish farmhouse style kitchen/dining room fitted with an integrated range oven and dishwasher and a boot room and utility room leading to a low maintenance rear garden. A spacious living room with wood burning stove and French doors to the garden completes the ground floor. On the first floor are four bedrooms, an ensuite to the master bedroom and a four-piece family bathroom. Benefits include gas radiator heating, uPVC double glazing and character features. Externally, there is a front porch, off road parking leading to a single garage and a study detached from the property behind the garage.

Tenancy Information

- Deposit: £2076.00 (1 Week Holding Deposit - £415.00)
- Smokers: Not Allowed
- Unfurnished
- Length of Tenancy: 12 Months
- Available: End of February 2026

Additional information

- Council Tax Band: D
- Energy Efficiency Rating:

Viewing

Viewing strictly by appointment – details below

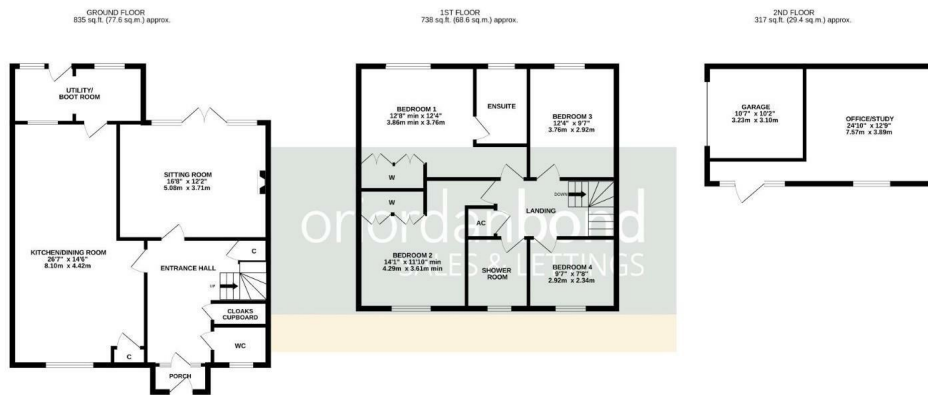
Disclaimer

O'Riordan Bond Estate Agents Limited has not tested apparatus, equipment, fittings or services and so cannot verify they are in working order. The buyer is advised to obtain verification from their solicitor or surveyor.

O'Riordan Bond Weston Favell Lettings

01604 814400

lettingswestonfavell@oriordanbond.co.uk



TOTAL FLOOR AREA : 1786sq.ft. (165.9 sq.m.) approx.

Whilst every attempt has been made to ensure the accuracy of the floorplan contained here, measurements of doors, windows, rooms and any other items are approximate and no responsibility is taken for any error, omission or mis-statement. This plan is for illustrative purposes only and should be used as such by any prospective purchaser. The services, systems and appliances shown have not been tested and no guarantee as to their operability or efficiency can be given.  
Made with Metaplan C2023

